

## Regional Palliative Care Consultation Team

The Regional Palliative Care Team members can provide formal or informal consultation on clinically complex palliative patients. The team can also provide Nurse Consultant support, Palliative Care Physician support and manages the Palliative Care Registry.

The goal is to provide equitable service throughout Northern BC. The Regional Palliative Care Consultation Team provides consultation services for all of the following sites and surrounding communities:

### Northeast

- Chetwynd
- Dawson Creek
- Fort Nelson
- Fort St John
- Hudson's Hope
- Tumbler Ridge

### Northern Interior

- Burns Lake
- Fort St James
- Fraser Lake
- Granisle
- MacKenzie
- McBride
- Prince George
- Quesnel
- Valemount
- Vanderhoof

### Northwest

- Atlin
- Dease Lake
- Houston
- Haida Gwaii
- Hazelton
- Kitimat
- Prince Rupert
- Smithers
- Stewart
- Terrace

## How to Request a Palliative Care Consultation

Consultations are accepted from multiple sources including patients/families, physicians, nurses, community agencies, hospices, hospitals, and LTC homes.

When referring to the Nurse Consultant, we encourage that the patient's primary physician is made aware of the request.

### TO REQUEST A CONSULTATION:

Please fill out the Request for Palliative Team Consultation form (10-513-7009)

Note: all fields are mandatory

### CONTACT

T 250-645-3791

F 250-565-5596

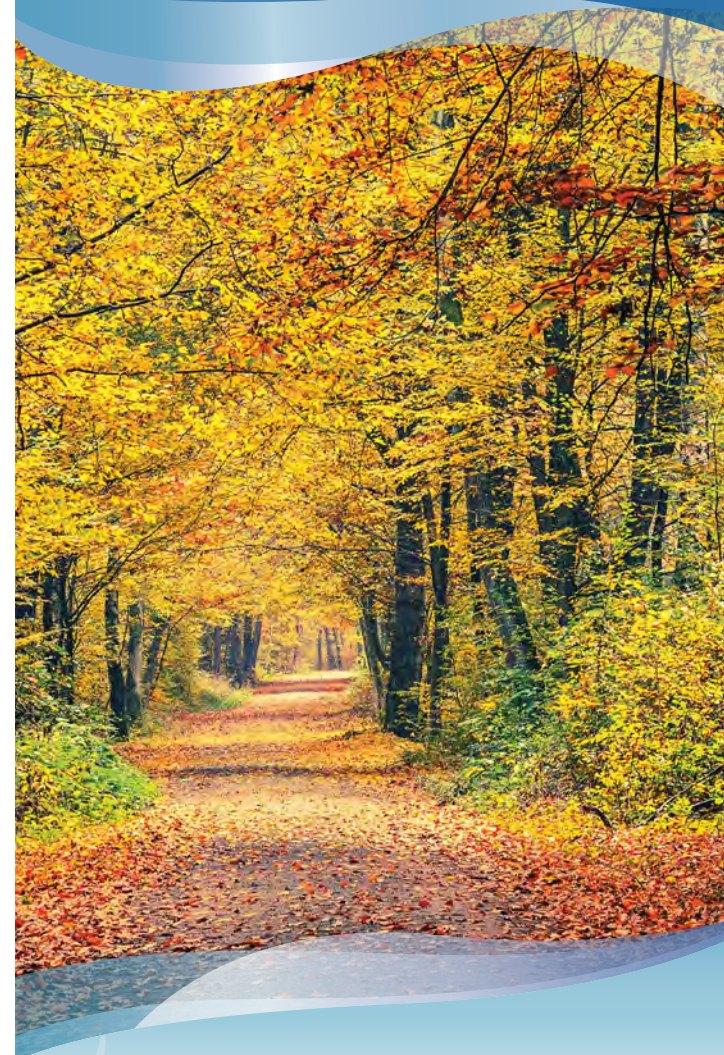
[Palliative.Care.Consult.Team@northernhealth.ca](mailto:Palliative.Care.Consult.Team@northernhealth.ca)



#HealthyNorth

[northernhealth.ca](http://northernhealth.ca)

## Palliative Care Pharmacist Lead



## What is Palliative Care?

Palliative care is a type of health care for people who are living with active, progressive and life-limiting illness.

Palliative care is holistic care aimed

at alleviating suffering whether physical, emotional, psychosocial or spiritual. Palliative care is provided by a multidisciplinary team and may occur alongside treatments that control or manage illness. Palliative care is about promoting the best possible quality of life for patients living with a life limiting illness and their family/loved ones.



## Palliative Care Pharmacist Lead Services

The PC Pharmacist helps build capacity among primary care providers in the delivery of palliative care by providing education and clinical support.

Services are provided to pharmacists and care teams across the continuum of care:

- Acute Care
- Home and Community Care
- Residential Care
- Promotes quality end-of-life care by:
- Serving as a resource to assist other health care professionals in interpretation and application of best practice guidelines
- Linking health care providers with specialized palliative care resources

Provides clinical support by:

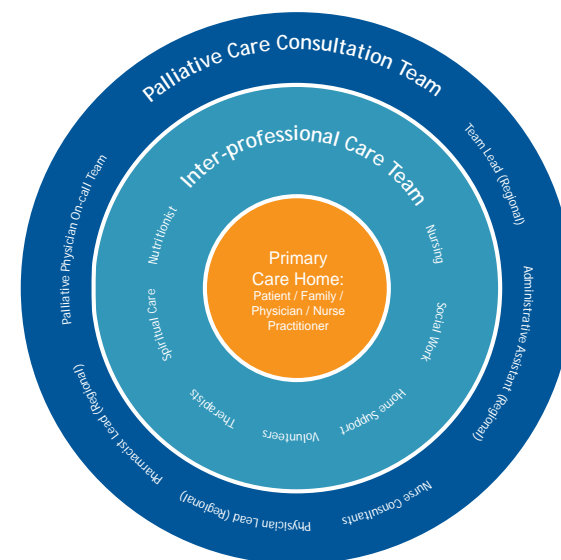
- Providing advice on management of complex pain and other symptoms
- Offering consultation to primary care providers by telephone, fax or email; and at times virtually or face to face
- Providing drug information on medications commonly used in palliative care
- Promotes health care professionals learning and development by:
- Providing educational inservices
- Providing case-based education and mentoring for service providers
- Developing clinical resources

## Palliative Care (PC)

In Northern Health:

- PC is provided to all patients/families living with any life limiting illness
- PC services are provided to patients/families in all care settings
- Direct PC is provided by primary care providers – the patient's own physician, home care nurse, community nurse, acute care or residential care staff, community or hospital pharmacy, etc.

The PC Consultation Team helps build capacity among primary care providers in the delivery of palliative care by providing education, resources and clinical support.



For more information on the NH Palliative Care Program visit: [northernhealth.ca](http://northernhealth.ca) or the palliative care site on Northern Health's intranet.